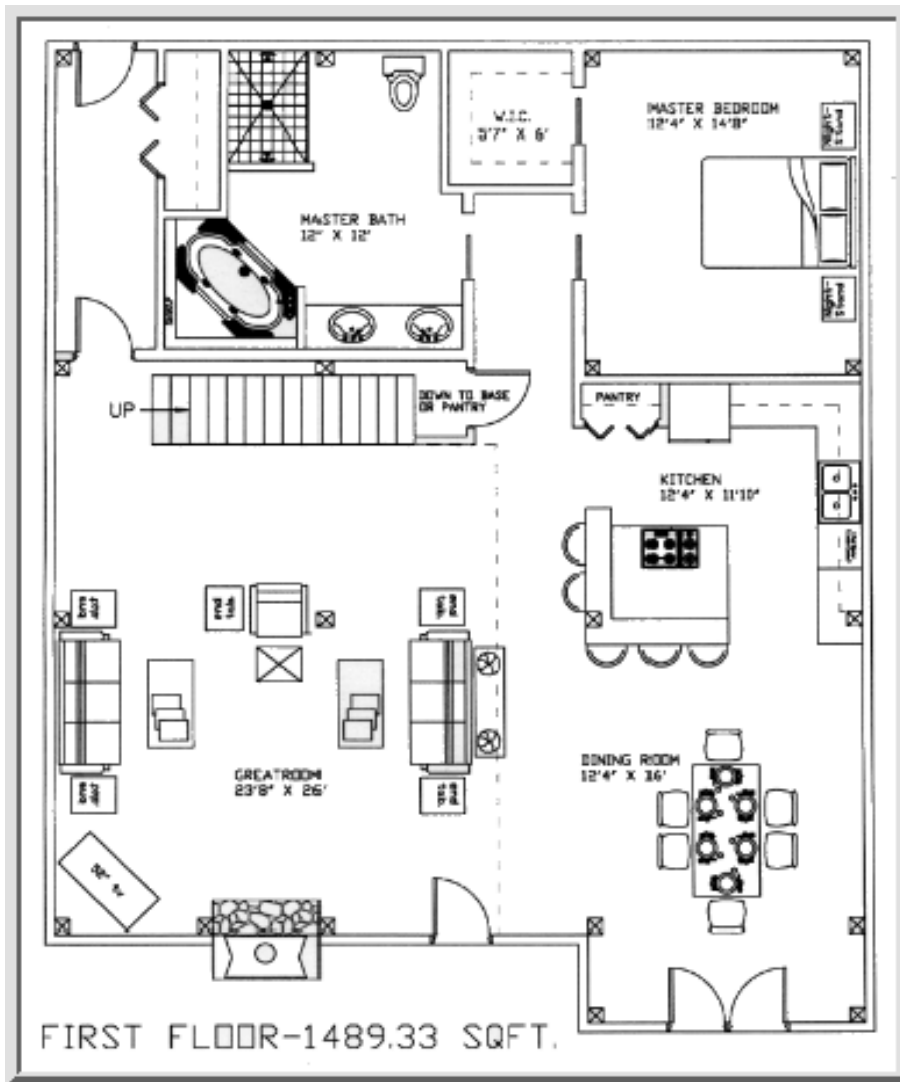




Cabin Creek Timber Frames

Building Tomorrow's Historic Homes Today™

Timber Frame Homes - The Wayah Floor Plans and Elevations

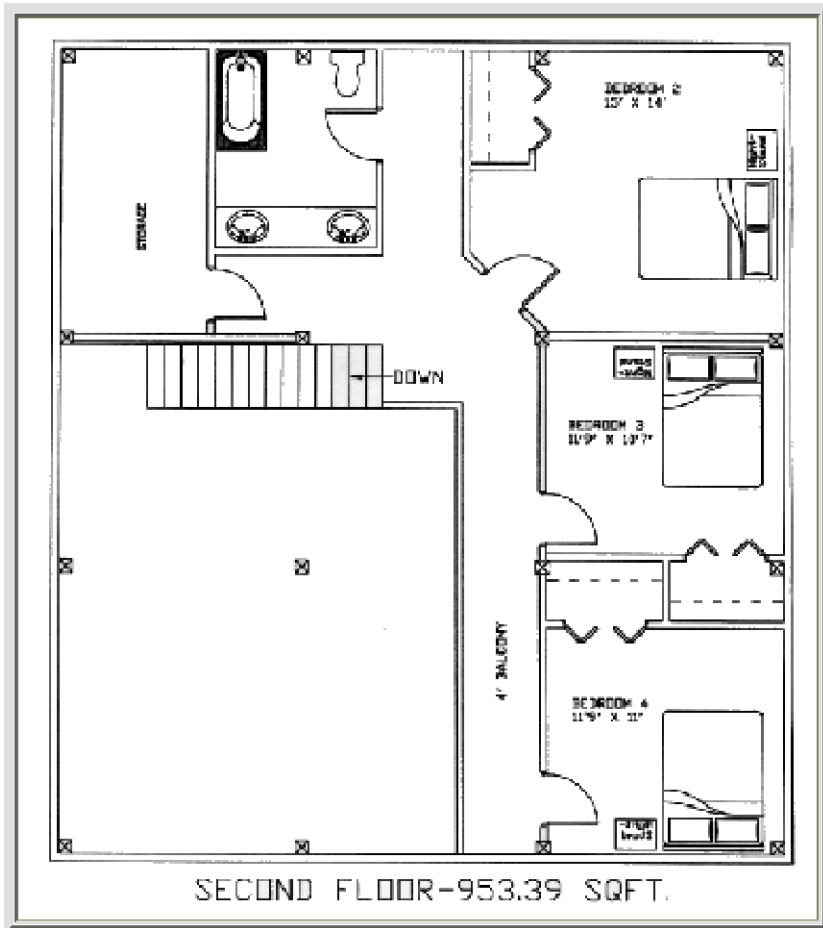


The Wayah is a stunning timber frame home plan. On the first floor you have a large kitchen that can easily accommodate two cooks. It has seating at the kitchen island for five so you the timber frame home owner and your guests can enjoy each others company.

The Wayah timber frame home has a large dining area off the kitchen for family dinners or more formal get together.

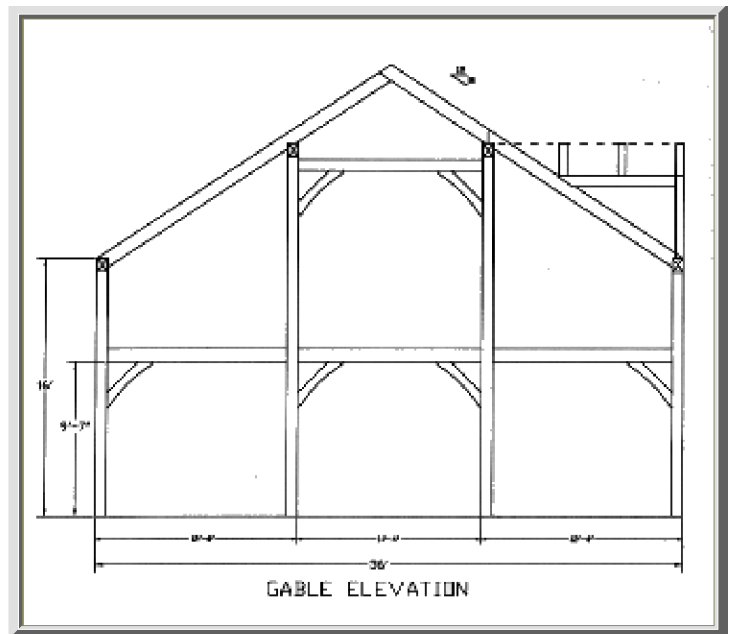
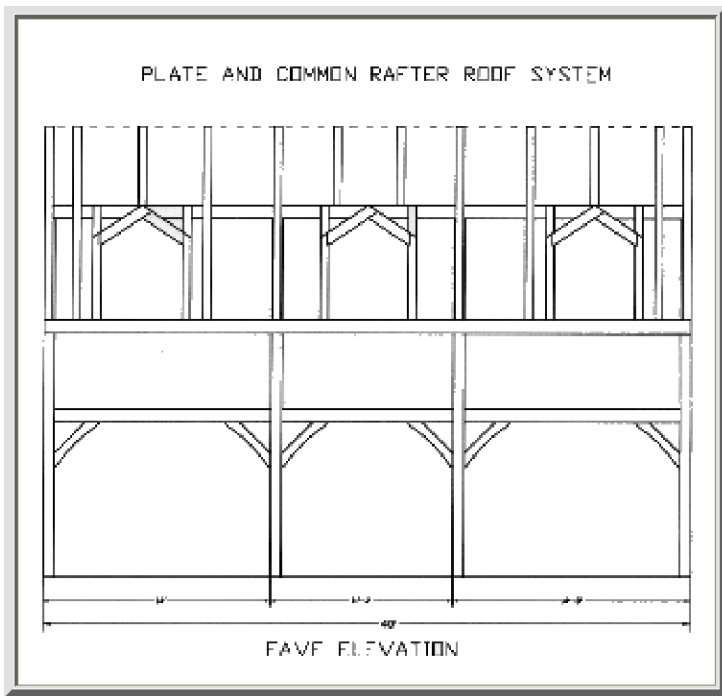
The Wayah timber frame home features an expansive great room. The 23'8" by 26' great room will easily accommodate large parties or gatherings. The Wayah great room could easily accommodate several more intimate seating areas.

The Wayah timber frame home features a large master suite, where you the timber frame home owner may retreat. Your retreat from the world features a substantial master bedroom with a spacious walk in closet. Located behind pocket doors for added privacy is the luxurious master bath. The Wayah master bath features a double sink, a large shower for two, and a whirlpool or soaking tub where you might forget the stresses of the day.



The Wayah timber frame home plan provides you with 1489+ sq. ft. of living space on the first floor, 953+sq.ft. of living space on the second floor for a total of 2442+sq.ft. of living space.

Please keep in mind that this is only a suggested floor plan. The timber frame is structural in and of itself. The interior walls are not used to support the house and therefore doors, windows, walls, may be placed where you desire.



Cabin Creek Timber Frames

6624 Georgia Rd. - Franklin, NC 28734

Toll Free Phone: **(877) 369 – 5899**

Phone: **(828) 369 - 5899**

Or

(828) 349 – 0734

Fax: **(828) 369 - 8512**

info@cabincreektimberframes.com

Copyright © 2006 Cabin Creek Timber Frames